

# MELODY 2

Collection 2022



Nils Hilbricht



7

12

17

23

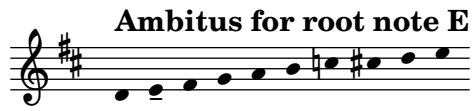
28

The core idea here was to never repeat a phrase exactly but still keep a simple ABCD form.



# MELODY 2

Collection 2022



Nils Hilbricht



7

12

17

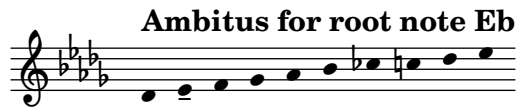
23

28

The core idea here was to never repeat a phrase exactly but still keep a simple ABCD form.

# MELODY 2

Collection 2022



Nils Hilbricht



7

12

17

23

28

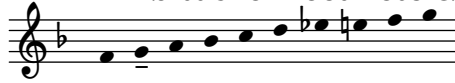
The core idea here was to never repeat a phrase exactly but still keep a simple ABCD form.



# MELODY 2

Collection 2022

Ambitus for root note G



Nils Hilbricht

A musical score for a melody in 3/2 time, one flat key signature. The score consists of six staves of music. The first staff starts with a treble clef and a 3/2 time signature. The melody is written in a simple, rhythmic style. The second staff is marked with a '7' at the beginning. The third staff is marked with a '12' at the beginning. The fourth staff is marked with a '17' at the beginning. The fifth staff is marked with a '23' at the beginning. The sixth staff is marked with a '28' at the beginning. The melody ends with a double bar line.

The core idea here was to never repeat a phrase exactly but still keep a simple ABCD form.





# MELODY 2

Collection 2022

