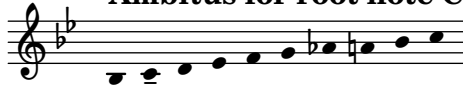


MELODY 2

Collection 2024

Ambitus for root note C



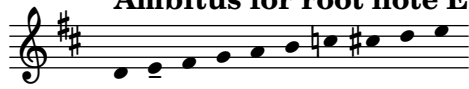
Nils Hilbricht

Main musical score for Melody 2, consisting of six staves of music. The score is written in a single system with a treble clef, a key signature of one flat (B-flat), and a 4/4 time signature. The notes are: C4 (quarter), D4 (quarter), E4 (quarter), F4 (quarter), G4 (quarter), A4 (quarter), B4 (quarter), B-flat4 (quarter), A4 (quarter), G4 (quarter), F4 (quarter), E4 (quarter), D4 (quarter), C4 (quarter). The score is divided into six staves, with measure numbers 6, 12, 19, 25, and 31 indicated at the beginning of each staff. The first staff contains measures 1-5. The second staff contains measures 6-11, with a repeat sign at the end of measure 11. The third staff contains measures 12-18. The fourth staff contains measures 19-24. The fifth staff contains measures 25-30. The sixth staff contains measures 31-36, ending with a double bar line.

MELODY 2

Collection 2024

Ambitus for root note E



Nils Hilbricht

A musical score for a melody in treble clef, key signature of two sharps (F# and C#), and 4/4 time signature. The score consists of six staves of music, with measure numbers 6, 12, 19, 25, and 31 indicated at the beginning of their respective staves. The melody is composed of eighth and quarter notes, with some rests and a repeat sign in the second staff. The piece concludes with a double bar line at the end of the sixth staff.

6

12

19

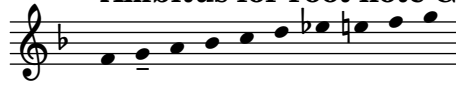
25

31

MELODY 2

Collection 2024

Ambitus for root note G



Nils Hilbricht

A musical score for a melody in G major, 4/4 time. The score consists of six staves of music. The first staff starts with a treble clef, a key signature of one sharp (F#), and a 4/4 time signature. The melody is written in a simple, folk-like style. The second staff begins with a measure number '6'. The third staff begins with a measure number '12'. The fourth staff begins with a measure number '19'. The fifth staff begins with a measure number '25'. The sixth staff begins with a measure number '31'. The piece concludes with a double bar line at the end of the sixth staff.

MELODY 2

Collection 2024

Ambitus for root note B



Nils Hilbricht

6

12

19

25

31