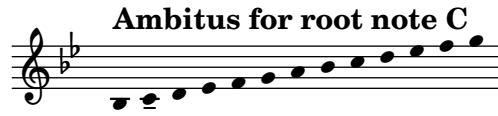


# PIECE 4

## Collection 2024



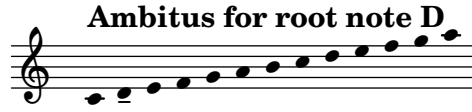
Nils Hilbricht

The main musical score for Piece 4, consisting of two staves (1 and 2) with measures 1 through 33. The score is written in a key signature of one flat (Bb) and a 4/4 time signature. It features a variety of rhythmic patterns, including eighth and sixteenth notes, and rests. The piece concludes with a double bar line at measure 33.



# PIECE 4

## Collection 2024



Nils Hilbricht



The main musical score consists of two staves, labeled 1 and 2, in 4/4 time. The score is divided into measures, with measure numbers 1, 7, 12, 17, 22, 28, and 33 indicated at the beginning of their respective systems. The music features a variety of rhythmic patterns, including eighth and sixteenth notes, and rests. A repeat sign is present at the beginning of measure 7. The piece concludes with a final cadence in measure 33.

39

1



2



Detailed description: This image shows two staves of musical notation. The first staff, labeled '1', begins with a treble clef and a key signature of one flat (B-flat). It contains six measures of music. The first measure has a quarter note G4, a quarter note A4, a dotted quarter note B-flat4, and an eighth note A4. The second measure has eighth notes G4, A4, B-flat4, and A4. The third measure has eighth notes G4, A4, B-flat4, and A4. The fourth measure has eighth notes G4, A4, B-flat4, and A4. The fifth measure has a quarter note G4, a quarter note A4, and a quarter note B-flat4. The sixth measure has a whole note G4. The second staff, labeled '2', also begins with a treble clef and a key signature of one flat. It contains six measures of music. The first measure has quarter notes G4, A4, B-flat4, and A4. The second measure has a half note G4. The third measure has quarter notes G4, A4, B-flat4, and A4. The fourth measure has a half note G4. The fifth measure has quarter notes G4, A4, and B-flat4. The sixth measure has a whole note G4. Both staves end with a double bar line.

# PIECE 4

## Collection 2024

Ambitus for root note E



Nils Hilbricht

The main musical score for Piece 4, consisting of seven systems of two staves each. The key signature is two sharps (F# and C#) and the time signature is 4/4. The systems are numbered 1, 7, 12, 17, 22, 28, and 33. The notation includes various rhythmic values such as quarter, eighth, and sixteenth notes, as well as rests and repeat signs. The piece concludes with a double bar line at the end of the final system.

39

1

2

Detailed description: This image shows a musical score for two staves, labeled '1' and '2'. The music is in the key of D major (two sharps) and consists of five measures. Staff 1 (top) features a melodic line with eighth and quarter notes, including a dotted quarter note in the first measure. Staff 2 (bottom) provides a harmonic accompaniment with chords and moving lines, including a half note in the first measure. The score concludes with a double bar line at the end of the fifth measure.

# PIECE 4

## Collection 2024

Ambitus for root note Eb



Nils Hilbricht



1  
2

7  
1  
2

12  
1  
2

17  
1  
2

22  
1  
2

28  
1  
2

33  
1  
2

39

1

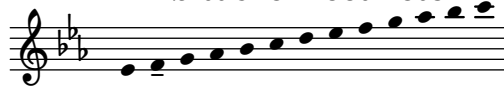
2

Detailed description: This image shows a musical score for two staves, labeled 1 and 2. The music is in a key signature of three flats (B-flat, E-flat, A-flat) and a common time signature. The first staff (labeled 1) contains a melodic line with a dotted quarter note followed by an eighth note in the first measure, and a series of eighth and quarter notes in the subsequent measures. The second staff (labeled 2) provides a harmonic accompaniment with a mix of quarter and eighth notes, often beamed together. Both staves end with a double bar line.

# PIECE 4

## Collection 2024

Ambitus for root note F



Nils Hilbricht



1

2

7

12

17

22

28

33

39

1

2

Detailed description: This image shows two staves of musical notation for measures 39 through 44. The music is written in a key signature of two flats (Bb and Eb) and uses a treble clef. Staff 1 (labeled '1') contains a melodic line with eighth and quarter notes, including some notes with accents. Staff 2 (labeled '2') contains an accompaniment line with quarter and eighth notes. The piece concludes with a double bar line at the end of measure 44.

# PIECE 4

## Collection 2024

Ambitus for root note G



Nils Hilbricht

The main musical score for Piece 4, consisting of two staves (1 and 2) with measures 1 through 32. The score is written in a 4/4 time signature with a key signature of one flat (Bb). The music features a variety of rhythmic patterns, including eighth and sixteenth notes, and rests. The score is divided into systems, with measure numbers 1, 7, 12, 17, 22, and 28 marked at the beginning of their respective systems. The notation includes stems, beams, and various note heads, with some notes having accents or slurs. The piece concludes with a final cadence in the 32nd measure.



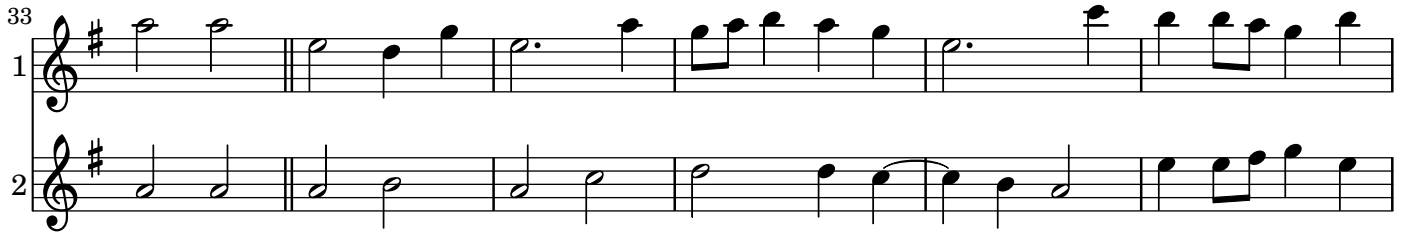
# PIECE 4

## Collection 2024

Ambitus for root note A



33  
1



2

Detailed description: This system contains two staves. Staff 1 (labeled '1') is in treble clef with a key signature of one sharp (F#). It begins with a double bar line. The first measure contains two quarter notes (F#4 and G4). The second measure contains two quarter notes (A4 and B4). The third measure contains a dotted quarter note (C5) followed by an eighth note (B4). The fourth measure contains an eighth note (A4) followed by a quarter note (G4). The fifth measure contains a dotted quarter note (F#4) followed by an eighth note (E4). The sixth measure contains an eighth note (D4) followed by a quarter note (C4). Staff 2 (labeled '2') is in treble clef with a key signature of one sharp (F#). It begins with a double bar line. The first measure contains two quarter notes (F#4 and G4). The second measure contains two quarter notes (A4 and B4). The third measure contains two quarter notes (C5 and B4). The fourth measure contains two quarter notes (A4 and G4). The fifth measure contains two quarter notes (F#4 and E4). The sixth measure contains two quarter notes (D4 and C4).

39  
1



2

Detailed description: This system contains two staves. Staff 1 (labeled '1') is in treble clef with a key signature of one sharp (F#). It begins with a double bar line. The first measure contains a quarter note (F#4) followed by a quarter note (G4). The second measure contains a quarter note (A4) followed by a quarter note (B4). The third measure contains a quarter note (C5) followed by a quarter note (B4). The fourth measure contains a quarter note (A4) followed by a quarter note (G4). The fifth measure contains a quarter note (F#4) followed by a quarter note (E4). The sixth measure contains a quarter note (D4) followed by a quarter note (C4). The seventh measure contains a quarter note (B4) followed by a quarter note (A4). The eighth measure contains a quarter note (G4) followed by a quarter note (F#4). The ninth measure contains a quarter note (E4) followed by a quarter note (D4). The tenth measure contains a quarter note (C4) followed by a quarter note (B4). The eleventh measure contains a quarter note (A4) followed by a quarter note (G4). The twelfth measure contains a quarter note (F#4) followed by a quarter note (E4). The thirteenth measure contains a quarter note (D4) followed by a quarter note (C4). The system ends with a double bar line. Staff 2 (labeled '2') is in treble clef with a key signature of one sharp (F#). It begins with a double bar line. The first measure contains two quarter notes (F#4 and G4). The second measure contains two quarter notes (A4 and B4). The third measure contains two quarter notes (C5 and B4). The fourth measure contains two quarter notes (A4 and G4). The fifth measure contains two quarter notes (F#4 and E4). The sixth measure contains two quarter notes (D4 and C4). The seventh measure contains two quarter notes (B4 and A4). The eighth measure contains two quarter notes (G4 and F#4). The ninth measure contains two quarter notes (E4 and D4). The tenth measure contains two quarter notes (C4 and B4). The system ends with a double bar line.



33  
1

Musical staff 1, measures 33-38. The staff is in treble clef with a key signature of three flats (B-flat, E-flat, A-flat). It contains a melodic line with various note values including quarter, eighth, and sixteenth notes, along with rests and a repeat sign at the beginning.

2

Musical staff 2, measures 33-38. The staff is in treble clef with a key signature of three flats. It contains a bass line with various note values including quarter, eighth, and sixteenth notes, along with rests and a repeat sign at the beginning.

39  
1

Musical staff 1, measures 39-44. The staff is in treble clef with a key signature of three flats. It contains a melodic line with various note values including quarter, eighth, and sixteenth notes, along with rests and a repeat sign at the beginning.

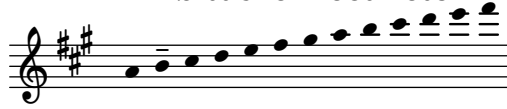
2

Musical staff 2, measures 39-44. The staff is in treble clef with a key signature of three flats. It contains a bass line with various note values including quarter, eighth, and sixteenth notes, along with rests and a repeat sign at the beginning.

# PIECE 4

## Collection 2024

Ambitus for root note B



Nils Hilbricht

1  
2

7  
1  
2

12  
1  
2

17  
1  
2

22  
1  
2

28  
1  
2

33  
1

Musical staff 1, measures 33-38. The staff is in treble clef with a key signature of three sharps (F#, C#, G#). It contains a melodic line with eighth and sixteenth notes, including a triplet of eighth notes in measure 35. The staff ends with a double bar line.

2

Musical staff 2, measures 33-38. The staff is in treble clef with a key signature of three sharps (F#, C#, G#). It contains a bass line with quarter and eighth notes, including a half note in measure 34. The staff ends with a double bar line.

39  
1

Musical staff 1, measures 39-44. The staff is in treble clef with a key signature of three sharps (F#, C#, G#). It contains a melodic line with eighth and sixteenth notes, including a triplet of eighth notes in measure 41. The staff ends with a double bar line.

2

Musical staff 2, measures 39-44. The staff is in treble clef with a key signature of three sharps (F#, C#, G#). It contains a bass line with quarter and eighth notes, including a half note in measure 40. The staff ends with a double bar line.